

# Archaeological Phase IA – GIS-based Survey Needs Assessment

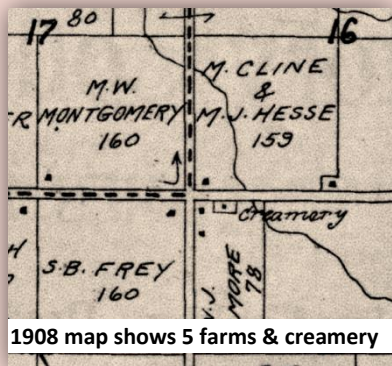
## Alliant Energy Pipeline Corridor

### Stanley Consultants

Story County, Iowa  
2013

In the initial stages of planning for the construction of a natural gas pipeline, Stanley Consultants identified a 13 x 2 mi corridor within which alternative routings would be selected. They contracted with EarthView Environmental, Inc. (EVE), to gather information on the known and likely location of archaeological sites within this corridor, to allow planners to identify routes least likely to encounter significant archaeological sites.

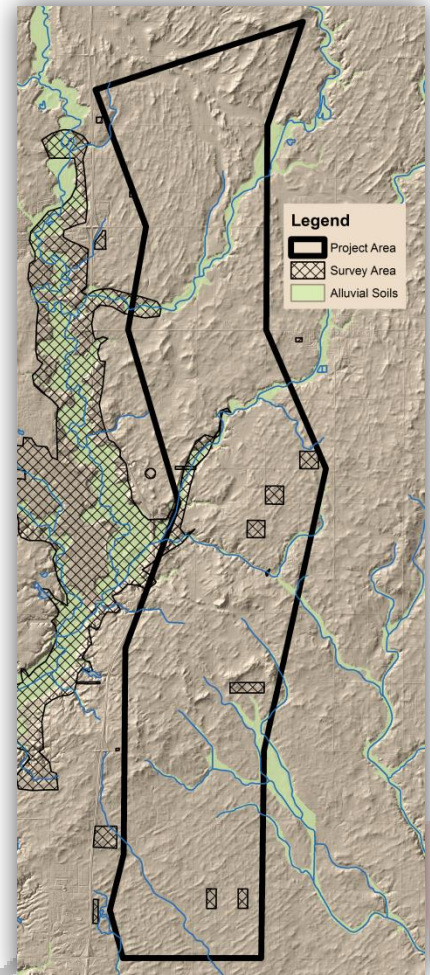
In Iowa, this initial data-gathering effort is called a Phase IA survey, and its purpose is to assess the need for, and planning of, a Phase I field survey. EVE was well-positioned to offer this service. Our expertise in GIS allowed us to overlay many kinds of maps and map data, giving Stanley Consultants a clear overview of high- and low-risk areas.



1908 map shows 5 farms & creamery

This project is typical of the range of information sources that EVE considers in Phase IA surveys:

- Sites and survey areas from I-Sites, a statewide archaeological GIS.
- The on-line National Register of Historic Places.
- LANDMASS, a model of archaeological site potential.
- Historic maps, from the earliest 1830s-1850s land surveys to township plats from 19<sup>th</sup>-20<sup>th</sup> century county atlases.
- Historic aerial photographs from the 1930s forward.
- SSURGO soils and STATEMAP geological maps showing terrains where archaeological sites are likely to



### Client Reference:

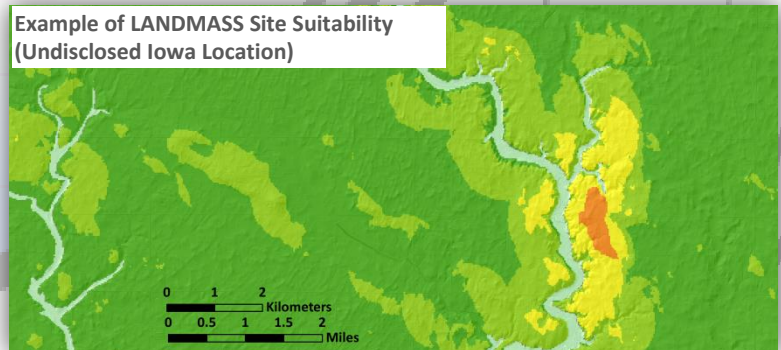
At Stanley Consultants:

Joe Rubino  
800 S. Chester St., Suite 500  
Centennial, Colorado 80112

Phone: (303) 925-8282

Email: RubinoJoe@stanleygroup.com

Website: www.stanleyconsultants.com



EarthView Environmental, Inc. 319-358-2542

For more information go to: [www.EarthViewEnvironmental.com](http://www.EarthViewEnvironmental.com)